

AI and Urban Design: Fostering Human-Centered and Sustainable Cities

Hee Sun (Sunny) Choi

PhD MA BA HKIUD, hee-sun.choi@polyu.edu.hk

Abstract

The 21st-century city is a complex, dynamic organism facing unprecedented challenges from climate change, rapid urbanization, and growing demands for equity and livability. Traditional urban design methodologies, often slow and siloed, are increasingly inadequate for this task. This paper posits that Artificial Intelligence represents a fundamental paradigm shift, moving urban design from a reactive, intuition-based practice to a proactive, evidence-driven science of systemic interdependencies. The paper examines AI's dual role as a powerful analytical tool for understanding urban complexity and as a generative partner in creating optimized, sustainable forms. The discussion traces the conceptual evolution from data-centric "Smart Urbanism" to the adaptive, predictive, and generative frameworks of "AI Urbanism" and "AI-aided Urbanism." A core focus is placed on how these frameworks can prioritize human-centered outcomes, notably through the nascent field of emotional geospatial analysis, which seeks to quantify and design for the psychological experience of place. Crucially, the paper dedicates significant analysis to the critical ethical imperatives of this transition—addressing issues of algorithmic bias, data sovereignty, transparency, and the indispensable role of the "human-in-the-loop" to ensure that the cities shaped by AI are equitable, democratic, and truly for people.

1. Introduction

Urban design stands at a critical inflection point. By 2050, nearly 70% of the global population will reside in cities, placing immense strain on infrastructure, ecosystems, and social cohesion. Concurrently, the climate crisis demands radical rethinking of urban form, mobility, and resource use. For decades, urban planning has relied on models, zoning maps, and public consultations—tools that, while valuable, often produce static plans struggling to keep pace with dynamic urban realities and which can inadvertently perpetuate historical inequities.

Enter Artificial Intelligence. Beyond the hype of automation, AI in 2025 is emerging as the most significant methodological toolkit for urban design since the advent of Geographic Information Systems (GIS). Its power lies not in replacing the designer's creativity, but in augmenting human intelligence with superhuman capacities for pattern recognition, predictive simulation, and multi-variate optimization. AI processes the vast, unstructured data generated by the contemporary city—from satellite imagery and IoT sensor streams to social media sentiment and mobility patterns—transforming it into actionable insight.

This paper argues that AI's integration signifies more than a technological upgrade; it catalyzes a new philosophy of urbanism. The paper explores this through three interconnected lenses:

- The Toolset: Examining the specific AI paradigms—Machine Learning, Generative AI, Agent-Based Modeling—and their practical

applications in analysis, design generation, and performance evaluation.

- The Paradigm Shift: Charting the evolution from the infrastructure-focused "Smart City" to the adaptive, human-centric visions of "AI Urbanism" and "AI-aided Urbanism."
- The Ethical Imperative: Confronting the profound ethical, social, and professional challenges inherent in algorithmic governance of urban space, advocating for a framework that prioritizes transparency, equity, and sustained human agency.

The goal is to provide a balanced, forward-looking analysis of how AI can be harnessed not to build colder, more efficient machines for living, but to foster urban environments that are more sustainable, resilient, and profoundly attuned to human well-being.

2. AI as an Analytical and Generative Toolbox for Urban Design

The urban designer's palette is expanding from physical materials to include algorithms and data streams. AI provides a sophisticated toolbox that enhances every stage of the design process, from initial site analysis to post-occupancy evaluation.

2.1. Core AI Paradigms and Their Urban Applications

AI in urban design is not monolithic. Its application is best understood through distinct computational paradigms, each suited to specific classes of urban problems.

- **Machine Learning (ML) and Deep Learning:** As the workhorses of urban analytics, ML algorithms excel at finding hidden patterns in colossal datasets. Supervised learning models can predict future land-use change, classify building types from aerial imagery, or correlate environmental sensor data with health outcomes. Deep Learning, particularly Convolutional Neural Networks (CNNs), has revolutionized spatial analysis. For example, researchers at MIT's Media Lab have used CNNs to analyze street-view imagery at a continental scale, creating quantitative maps of perceived urban safety, liveliness, and even beauty. This moves subjective design qualities into the realm of empirical, scalable analysis. In 2025, ML is increasingly used for "predictive policing" of urban systems—not for surveillance, but for maintenance, forecasting everything from pothole formation to sewer blockages before they occur, enabling truly preventative infrastructure management.

- **Generative AI and Search & Optimization:** This is where AI transitions from analysis to creation. Generative Adversarial Networks (GANs) and diffusion models can produce novel urban design prototypes based on learned patterns from thousands of existing plans. More strategically, search and optimization algorithms like Genetic Algorithms (GAs) are used for multi-objective optimization. A designer can define goals—maximize solar gain in winter, minimize wind tunnel effects, achieve a certain population density, preserve view corridors—and the GA will evolve thousands of building massing itera-

tions to find Pareto-optimal solutions. A landmark 2024 project in Rotterdam used this method to generate a district layout that balanced energy production, public space quality, and construction cost, presenting planners with a suite of high-performing options rather than a single, compromise-laden proposal.

- **Simulation Intelligence with Agent-Based Models (ABMs):** ABMs create a "digital sandbox" to simulate complex urban behaviors. By programming virtual agents (pedestrians, cyclists, autonomous vehicles) with simple rules, designers can observe the emergent outcomes of a proposed master plan. How will people naturally move through a new plaza? Where might congestion form if a new school is added? ABMs provide dynamic, bottom-up insights that static circulation diagrams cannot. Advanced ABMs now incorporate cognitive models, simulating how agents with different priorities (a tourist vs. a commuter) might perceive and navigate the same space, bringing a layer of behavioral psychology into the design process.

2.2. Enhancing the Design Workflow: From Data to Decision

The integration of these tools creates a more fluid, evidence-based design workflow. In the analysis phase, AI can rapidly synthesize environmental data, socio-economic indicators, and mobility patterns to generate a hyper-detailed, multi-layered site diagnosis. During concept generation, generative algorithms can produce a wide array of contextual massing studies, freeing designers from the blank page and allowing

them to focus on curating and refining promising ideas. In the evaluation phase, simulation models can stress-test designs against a battery of performance criteria—energy use, pedestrian comfort, emergency egress, economic viability—in real-time, enabling rapid iteration.

This creates a new paradigm of performance-driven design. For instance, Sidewalk Labs' Delphi platform (conceptual) envisioned a system where planners could adjust a zoning parameter, like height limits, and immediately see the projected impact on housing capacity, shadow patterns, and transit ridership. This closes the feedback loop between design intent and systemic outcome, making urban design a more rigorous, accountable discipline.

3. From Smart Urbanism to AI Urbanism: A Conceptual Evolution

The application of technology to cities has evolved through distinct phases, each reflecting broader shifts in computational capability and urban theory.

3.1. Smart Urbanism: The Efficiency Paradigm

The "Smart City" model of the 2010s was characterized by a top-down, engineering-centric vision. It focused on deploying IoT sensors and centralized dashboards to optimize discrete municipal services—traffic light timing, waste collection routes, energy grids. The goal was efficiency, often measured in terms of cost savings and resource reduction. Critics rightly argued that this model could be technocratic, priori-

tizing flows of data and capital over the flows of social life, and risked creating surveillance-heavy urban environments that served corporate platforms more than citizens.

3.2. AI Urbanism: The Adaptive, Generative Paradigm

"AI Urbanism," emerging fully by the mid-2020s, represents a qualitative leap. It is defined not by sensors alone, but by the cognitive layer of AI that interprets sensor data and generates adaptive responses. The city is no longer just "instrumented"; it becomes learnable, predictive, and generative. Key characteristics include:

- **Proactivity:** Moving beyond reacting to current traffic jams to predicting and dispersing them before they form by nudging mobility choices.
- **Generative Capacity:** Using AI to co-create urban form and policy, as seen in the optimization and generative design tools.
- **Digital Twins as a Foundational Infrastructure:** A city's digital twin evolves from a static 3D model into a living, learning simulation fed by real-time data. Singapore's Virtual Singapore project is a pioneering example, used for flood modeling, evacuation planning, and studying urban heat island effects. In 2025, these twins are becoming the primary testing ground for any major urban intervention.

3.3. AI-aided Urbanism: The Human-Centered Synthesis.

Emerging as a vital counterpoint to purely tech-

nocratic visions, the concept of "AI-aided Urbanism" reframes artificial intelligence as a tool for human empowerment. It positions human agency, well-being, and values as the non-negotiable core of the planning process. It frames AI not as an autonomous designer, but as a powerful aid that augments human creativity and empathy. "AI-aided Urbanism" emphasizes hybrid intelligence: the designer sets the values-driven goals (equity, sustainability, joy), defines the constraints, and makes the final judgment calls, while AI handles the computational heavy lifting of analysis, generation, and simulation. It is a partnership model that safeguards the social and artistic dimensions of placemaking.

3.4. Emotional Geospatial Networks: Designing for the Urban Psyche

The most profound expression of human-centered AI Urbanism is the exploration of emotional geospatial networks. This research, conducted by Choi (2023-2025), is at the forefront of exploring a key question: Can we measure, map, and ultimately design for the emotional experience of the city? Choi's pilot studies utilize a combination of wearable sensors (to measure heart rate variability and galvanic skin response), mobile EEG headsets, and geolocation data to generate real-time "emotion maps." By integrating this biometric data with computer

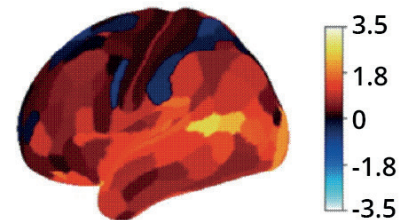
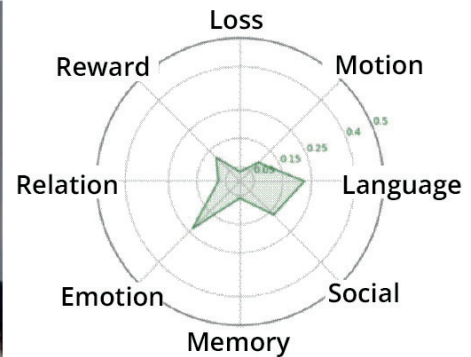
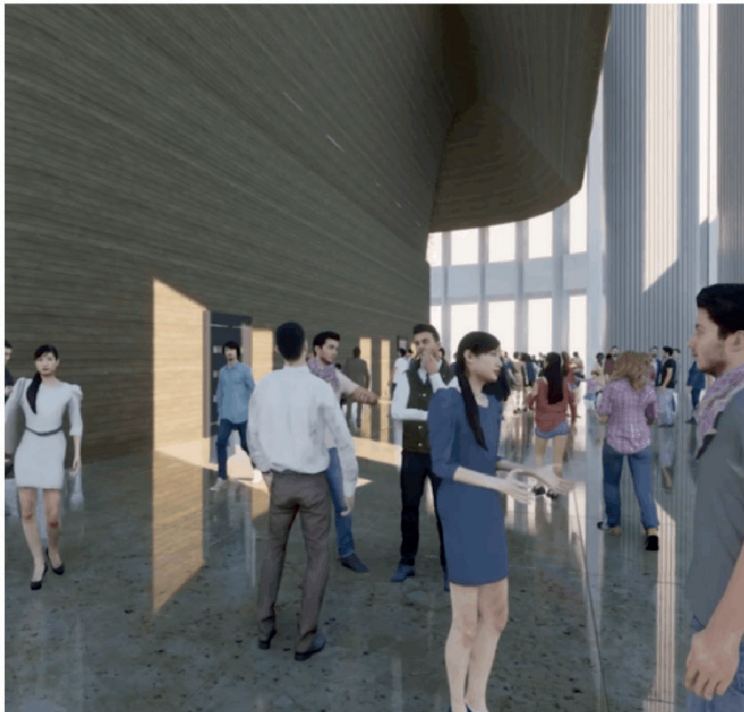


Figure 1. fMRI data analysis. (Source: Author, adapted from Choi et al., 2024)

vision analysis of street views, Choi demonstrates that specific spatial features—such as street enclosure, the presence of greenery, and façade complexity—can be correlated with physiological and self-reported states of stress, calm, or engagement. The implications are significant. The practical applications are transformative. For instance, planning authorities could evaluate a proposed streetscape not only on traditional metrics like vehicular Level of Service but also on a projected "stress map" for pedestrians. Alternatively, AI systems could dynamically adjust the lighting and soundscape of a public square based on the aggregate mood sensed within it, actively working to reduce anxiety and encourage social interaction. This paradigm moves the field toward emotionally-intelligent spatial design, where the primary objective is to create environments that actively cultivate psychological well-being and strengthen community bonds.

4. Ethical Considerations and the Imperative of Human-in-the-Loop

The power of AI in shaping the built environment brings profound ethical responsibilities. Without careful governance, it risks amplifying existing inequalities and creating new forms of alienation.

4.1. Algorithmic Bias and Spatial (In)Justice AI models are only as unbiased as the data they are trained on. Historical urban data often encodes decades of discriminatory practices like redlining. An AI trained on such data to predict "high-value" areas for investment could simply perpetuate and digitize these spatial injustices.

A notorious early example was an algorithm used by some US cities to optimize police patrols, which led to over-policing in historically marginalized neighborhoods. In design, an algorithm optimizing for "property value increase" might consistently recommend gentrifying interventions. Combatting this requires intentional curation of training datasets, algorithmic audits for fairness, and the inclusion of equity metrics as primary optimization goals.

4.2. The Black Box Problem and Democratic Accountability Many advanced AI models, particularly deep learning systems, are opaque "black boxes." When an AI recommends demolishing one neighborhood block over another for a green space, can it provide a human-interpretable rationale? The lack of explainability threatens democratic accountability. Urban decisions that affect thousands must be justifiable. The field of Explainable AI (XAI) is therefore critical for urban applications, developing methods to translate algorithmic decisions into transparent narratives—"This area was prioritized for canopy cover because it has the highest density of vulnerable elderly residents and currently exceeds heat-stress thresholds."

4.3. Data Sovereignty and Privacy The emotional geospatial networks and pervasive sensing required for adaptive cities raise serious privacy concerns. Who owns the data about how citizens move and feel in public space? Is it the municipality, a private tech vendor, or the individual? Robust data governance frameworks, potentially leveraging privacy-preserving technologies like federated learning (where models

are trained on decentralized data without it ever being centralized), are non-negotiable. Citizens must have agency over their personal data and trust that it is used for public benefit, not surveillance or manipulation.

4.4. The Evolving Role of the Urban Designer AI will not replace urban designers, but it will radically redefine the profession. The value shifts from technical mastery of manual drawing or basic GIS to curatorial and ethical mastery. The future urban designer is a "hybrid intelligence conductor":

- The Definer of Values: Setting the ethical and social parameters for the AI to work within.
- The Interpreter of Outputs: Critically evaluating AI-generated options, understanding their biases, and selecting directions aligned with community values.
- The Facilitator of Participation: Using AI tools to create more accessible public engagement—e.g., using a generative interface to allow residents to co-design their street and instantly see the impacts.
- The Custodian of Context: Bringing irreplaceable human understanding of local history, culture, and intangible place qualities that data cannot capture.

Professional education must adapt accordingly, training designers in data literacy, ethics, and human-computer collaboration alongside traditional spatial design skills.

Conclusion and Future Directions

As we look towards the remainder of the 2020s and beyond, the integration of AI into urban design is inevitable and holds immense promise. It offers a path to cities that are more resilient to climate shocks, more efficient in their use of resources, and more responsive to the needs of their inhabitants. The vision of AI Urbanism, particularly in its human-centered, "AI-aided" form, points toward a future where technology deepens our connection to place and to each other, rather than diminishing it.

However, this is not a deterministic future. The trajectory will be shaped by the choices we make today. The key challenges are not primarily technological, but socio-technical. The central question for 2025 and beyond is not if AI will shape our cities, but how, and in whose interest.

Key frontiers for research and action include:

1. Developing Robust "Public Interest AI" Frameworks: Creating open-source platforms, standardized ethical audit protocols, and regulatory sandboxes to ensure AI tools serve the public good.
2. Bridging the Granularity Gap: Fusing the "small data" of qualitative, ethnographic understanding with the "big data" of sensors and satellites to create a truly holistic urban intelligence.
3. Fostering Democratized Design Tools: Building generative AI interfaces that are accessible to community groups, enabling bot-

tom-up, participatory planning at scale.

4. Establishing New Metrics for Success: Moving beyond GDP and traffic speed to adopt well-being indices, ecological regeneration metrics, and equity audits as the primary measures of urban design success, and training AI to optimize for these.

The ultimate goal is a new symbiotic relationship between human and machine intelligence in the service of placemaking. In this partnership, AI handles the complexity of the system, while humanity provides the wisdom of values, the nuance of context, and the empathy for lived experience. By embracing this collaborative model with ethical vigilance, we can leverage AI not to build smarter cities, but to nurture wiser, more compassionate, and truly sustainable urban societies.

References

- [1] Choi, H. S., & Zhang, W. (2024). Artificial intelligence as research methods in urban design. *Journal of Urban Design*, 29(3), 315-335.
- [2] Choi, H.S., 2025. *Human Centric Design : Spatial Cognition and Hyper-morphology*, Springer, Palgrave
- [3] Choi, H.S., Bruyns G, Cheng,T, 2024, Evolving research method in three-dimensional and volumetric urban morphology of a highly dense city, *Journal of Architecture and Urbanism*, 48 (1) <https://doi.org/10.3846/jau.2024.18841>
- [4] Choi, H.S., Bruyns G, Cheng,T, Zhang, W, Shama ,S, 2024, Human cognition and emotions for human centric design in Vertical urban spaces, *Journal of urban design*, DOI: 10.1080/13574809.2024.2357803
- [5] Choi, H.S., Bruyns G, Zhang, W, Cheng,T, Sharma, S., 2023, Spatial Cognition and Three-Dimensional Vertical Urban Design Guidelines—Cognitive Measurement and Modelling for Human Centre Design, *Urban Sci.* 2023, 7(4), 125; <https://doi.org/10.3390/urban-sci7040125>
- [6] Choi, H. S., Almulhim, A. I., & Sharifi, A. (2026). AI as a catalyst for innovative scientific research in urban design: Enhancing analytical rigor and human-centred design. *Environment and Planning B: Urban Analytics and City Science*, 53(1), 45-67.
- [7] Naik, N., Kominers, S. D., Raskar, R., Glaeser, E. L., & Hidalgo, C. A. (2017). Computer vision reveals urban features associated with perceptions of safety and income. *Proceedings of the National Academy of Sciences*, 114(28), 7341-7346.
- [8] Zhang, F., Zhou, B., Ratti, C., & Liu, Y. (2023). Urban flood simulation and risk assessment enhanced by a coupled human-water model and deep learning. *Nature Communications*, 14, 5689.
- [9] Choi, H. S. (2026). Emotional geospatial networks: Sensing the urban pulse for human-centered planning. In A. I. Almulhim, A. Sharifi, A. Cheshmehzangi, B. He, & M. de Jong (Eds.), *AI-IoT for smart urban planning and sustainable development* (pp. 101-125). Springer Nature.
- [10] Zhang, W., & Choi, H. S. (2025). AI-aided urbanism. In P. Tyagi et al. (Eds.), *Next generation smart cities: Challenges and opportunities* (Lecture Notes in Civil Engineering, Vol. 312). Springer.
- [11] Batty, M. (2018). *Inventing future cities*. The MIT Press.
- [12] Sidewalk Labs. (2020). *Delphi: An urban information model* [Whitepaper]. Sidewalk Labs.
- [13] World Economic Forum. (2024). *AI for urban innovation: Governing the inclusive transition of cities*. WEF.
- [14] Singapore Government. (2023). *Virtual Singapore: The dynamic 3D city model and collaborative data platform*. National Research Foundation.